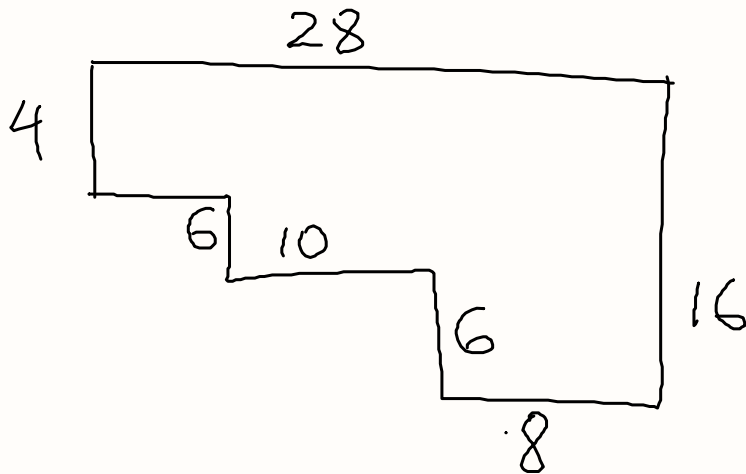
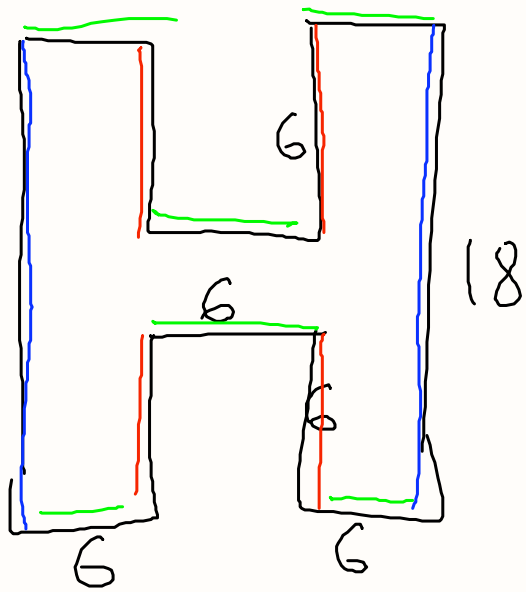


GEDM. p.172



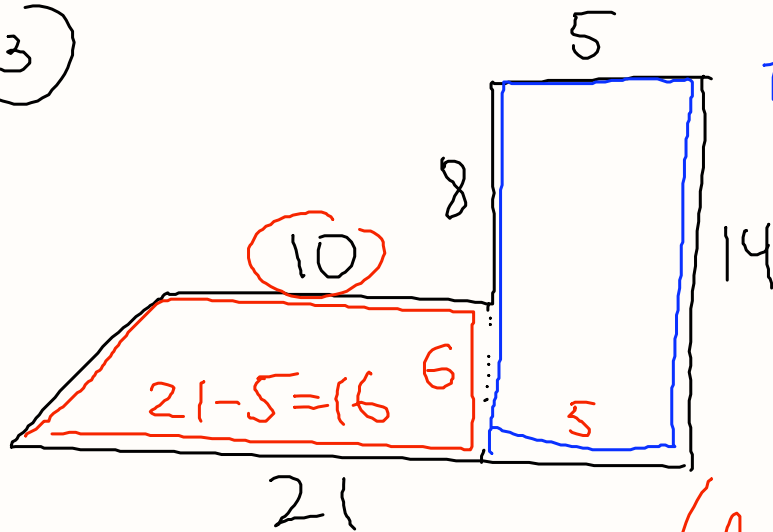
$$\begin{aligned} &28 + 16 + 8 + 6 \\ &+ 10 + 6 + 10 + 4 = \\ &= \end{aligned}$$

$$\begin{aligned} &28 + 28 + 16 + 16 = \\ &= 88 \text{ cm} \end{aligned}$$



$$\begin{aligned} &18 + 18 + 6 \cdot 4 + \\ &+ 6 \cdot 6 = \\ &= 36 + 24 + 36 = \\ &= 96 \text{ in} \end{aligned}$$

(3)



$$\begin{aligned}\text{AREA RECTANGLE} &= \\ \text{base} \cdot \text{HEIGHT} & \\ 5 \cdot 14 &= 70\end{aligned}$$

$$\begin{aligned}\text{AREA TRAPEZOID} &= \frac{(\text{base 1} + \text{base 2}) \cdot h}{2} \\ \text{base 1} = 16 \quad \text{base 2} = 10 &= \frac{(16 + 10) \cdot 6}{2} = \\ &= 13 \cdot 6 = 78\end{aligned}$$

(4)



$$A_{\text{square}} = 4 \cdot 4 = 16$$

$$A_{\Delta} = \frac{b \cdot h}{2}$$

$$b = 4 \quad h = 4$$

$$A_{\Delta} = \frac{4 \cdot 4}{2} = 8$$

$$A = A_{\square} + A_{\Delta} = 16 + 8 = 24 \text{ ft}^2$$

